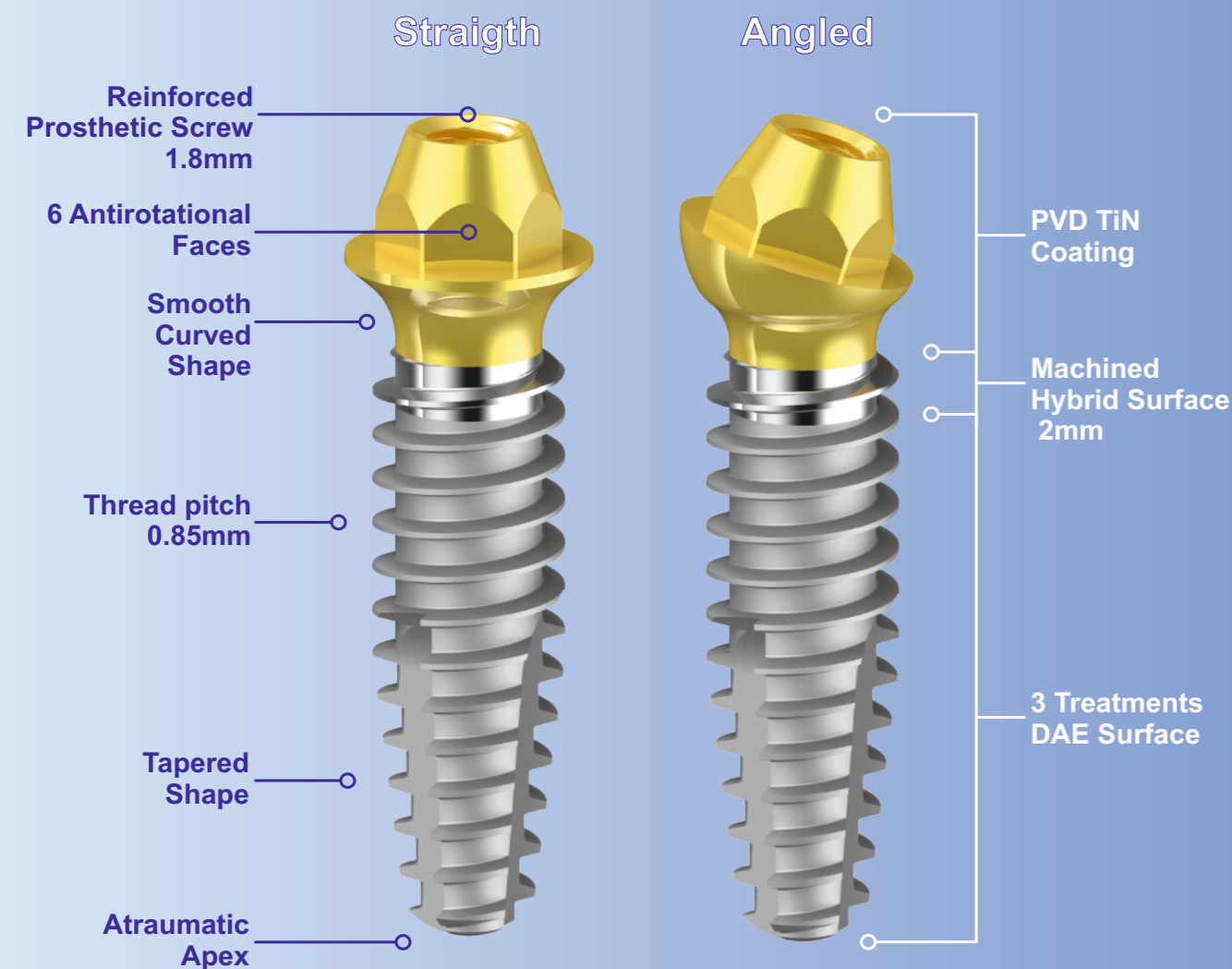


## TECHNICAL FEATURES



## UNI-Q-MUA 2.0

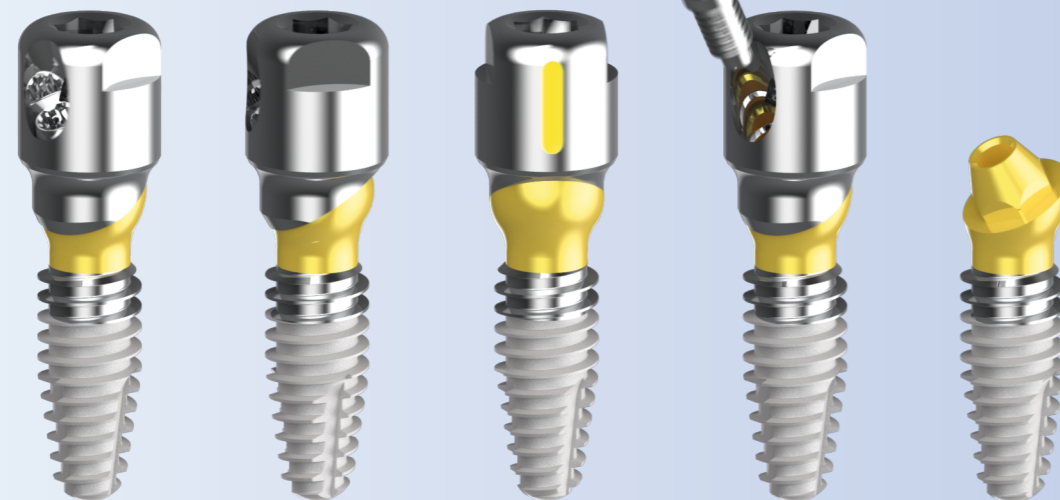
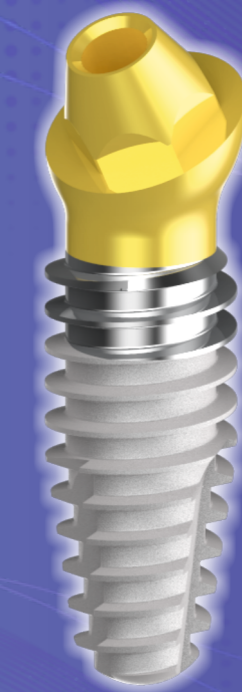


### Best Solution for Tissue Management in Full Arch Rehabilitations.

- Three different surface treatments corresponding to the three different biologic interfaces:  
Soft gingival tissue, hard Cortical bone and soft Cancellous bone.
- Absence of bacterial inflammatory infiltrate between implant and prosthetic part.
- Minimal invasive surgical procedure with reduced diameter of the neck and less distal bone interference.

### Best Ergonomic Solution for Immediate Load.

- Minimize Surgery Time with the elimination of microscrews.
- Increase of mechanical resistance between Prosthetic supra-structure and Implants thanks to the bigger retention screw of 1,8 mm.
- Perfect positioning with unlimited number of microadjustments thanks to multi-reference marks.



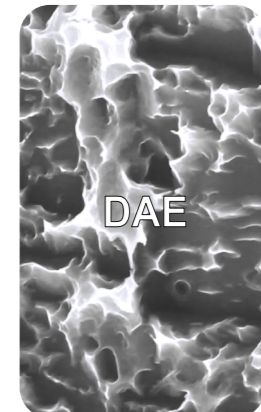
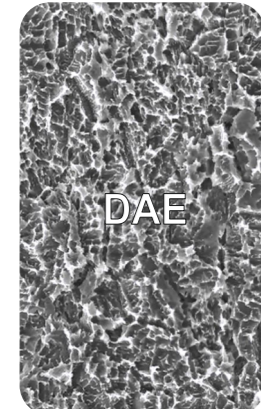
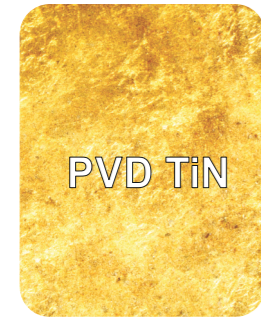
Ing. C. A. Issoglio & C. S.r.l.  
Via F.lli Di Dio, 68 - 28887 Omegna (VB) - ITALIA  
Tel. +39.0323.828.004 - Fax +39.0323.828.914  
www.resista.it - info@resista.it

## UNI-Q-MUA 2.0

MONOPHASIC TRANSGINGIVAL IMPLANT

# UNI-Q-MUA

## 3 Different Surface Treatments for Hard and Soft Tissue Management



**Bone healing around titanium and titanium nitride-coated dental implants with three surfaces: an experimental study in rats.** Scarano A, Piattelli M, Vrespa G, Petrone G, Iezzi G, Piattelli A. - Clin Implant Dent Relat Res. 2003

**Bacterial adhesion on titanium nitride-coated and uncoated implants: an in vivo human study.** Scarano A, Piattelli M, Vrespa G, Caputi S, Piattelli A. - J Oral Implant. 2003

**Cytocompatibility of implants coated with titanium nitride and zirconium nitride.** Prachar P, Bartakova S, Brezina V, Cvrcek L, Vanek J. - Bratisl Lek Listy. 2015

**Evaluation of antibacterial activity and osteoblast-like cell viability of TiN, ZrN and (Ti1-xZrx)N coating on titanium.** Ji MK, Park SW, Lee K, Kang IC, Yun KD, Kim HS, Lim Hp. - J Adv Prosthodont. 2015

**Surface properties correlated with the human gingival fibroblasts attachment on various materials for implant abutments: a multiple regression analysis.** Kim YS1, Shin SY, Moon SK, Yang SM. - Acta Odontol Scand. 2015

**Machined and sandblasted human dental implants retrieved after 5 years: a histologic and histomorphometric analysis of three cases.** Iezzi G, Vantaggiato G, Shibli JA, Fiera E, Falco A, Piattelli A, Perrotti V. - Quintessence Int. 2012

**Polyspecies biofilm formation on implant surfaces with different surface characteristics.** Schmidlin PR, Müller P, Attin T, Wieland M, Hofer D, Guggenheim B. - J Appl Oral Sci. 2013

**Red blood cell and platelet interactions with titanium implant surfaces.** Park JY, Davies JE. - Clin Oral Implants Res. 2000

**Surface chemistry effects of topographic modification of titanium dental implant surfaces. 2: In vitro experiments.** Morra M, Cassinelli C, Bruzzone G, et al. - Int J Oral and Maxillofac Implants 2003

**Surface microtopography regulates osteointegration: the role of implant surface microtopography in osteointegration.** Schwartz Z1, Nasazky E, Boyan BD. - 2005

**A new chemical etching process to improve endosseous implant osseointegration: in vitro evaluation on human osteoblast-like cells.** Giordano C, Sandrini E, Busini V, Chiesa R, Fumagalli G, Giavaresi G, Fini M, Giordano R, Cigada A. - Int J Artif Organs. 2006

**Enhancing surface free energy and hydrophilicity through chemical modification of microstructured titanium implant surfaces.** Morra M, Volpe CD, Siboni S, by F. Rupp, L. Scheideler, N. Olshanska, M. de Wild, M. Wieland, J. Geis-Gerstorfer. - J Biomed Mater Res A. 2006

**Assessing double Acid-etched implants submitted to orthodontic forces and used as prosthetic anchorages in partially edentulous patients.** De Cravero Marta R1, Carlos IJ. - Open Dent J. 2008.

**Mechanical stability of immediately loaded implants with various surfaces and designs: a pilot study in dogs.** Neugebauer J, Weinländer M, Lekovic V, von Berg KH, Zoeller JE. - Int J Oral Maxillofac Implants. 2009

**Influence of implant shape, surface morphology, surgical technique and bone quality on the primary stability of dental implants.** Elias CN1, Rocha FA, Nascimento AL, Coelho PG. - J Mech Behav Biomed Mater. 2012

**Early-loaded laser-sintered versus acid-etched one-piece dental implants for mandibular premolars replacement: a preliminary study.** El-Gammal M1, Ghoneem N, Tawfik H, Madina MA, Fadhil ON, Maria OM. - Implant Dent. 2014

**Dual-etched implants loaded after 1- and 2-month healing periods: a histologic comparison in baboons.** Verrino AR, Kohles SS, Holt RA Jr, Lee HM, Caudill RF, Kenealy JN. - Int J Periodontics Restorative Dent 2002

**Early endosseous integration enhanced by dual acid etching of titanium: a torque removal study in the rabbit.** Klokkevold P, Johnson P, Dadgostari S, Caputo A, Davies JE, Nishimura R. - Clin Oral Implants Res 2001

### 3 SURFACE TREATMENTS

1) Transgingival and prosthetic coating in PVD TiN - *Improved mechanical resistance to wear, antibacterial properties, reduced adhesion of bacterial biofilm.*

2) Hybrid Machined Surface for 1.5mm - *Reduction of the bacterial biofilm adhesion for the control of peri-implantitis.*

3) DAE Double Acid Etching Surface - *Surface increase, removal of micro-defects, increase in surface hydrophilicity, increase in adhesion of fibrin bridges, perfection of the substrate for cell adhesion, activation of topographic communication for cellular/osteoblastic gene expression, increase in bio-electrical antibacterial activity.*

#### The Bacterial Anti-Adhesive Activity of Double-Etched Titanium (DAE) as a Dental Implant Surface

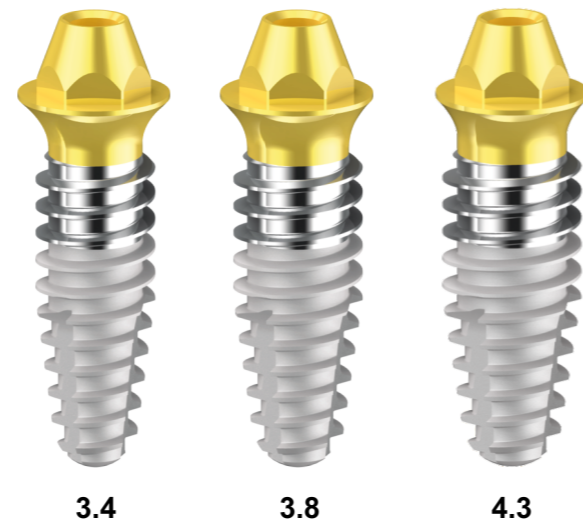
Morena Petri, Alessandra Giuliani, Emanuela Di Campi, Silvia Di Lodovico, Giovanna Iezzi, Adriano Piattelli and Simonetta D'Ercole<sup>1</sup>

International Journal of Molecular Sciences 2020, 21, 8315; doi:10.33218315

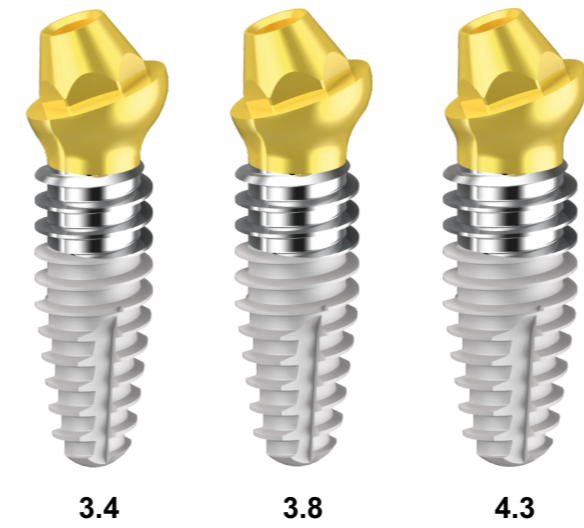
# UNI-Q-MUA

## Monophasic implant for screwed Prosthetic solutions: Toronto, Crowns and bridges

### 3 DIAMETERS WITH UNIFIED PROSTHETICS

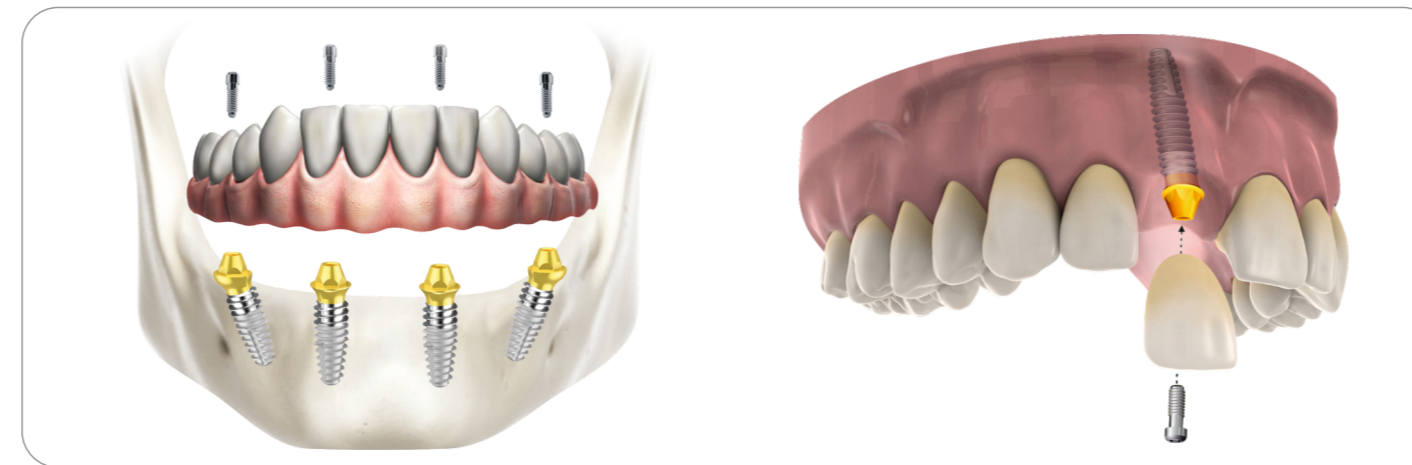


### 3 AVAILABLE ANGLES 0° - 17° - 30°

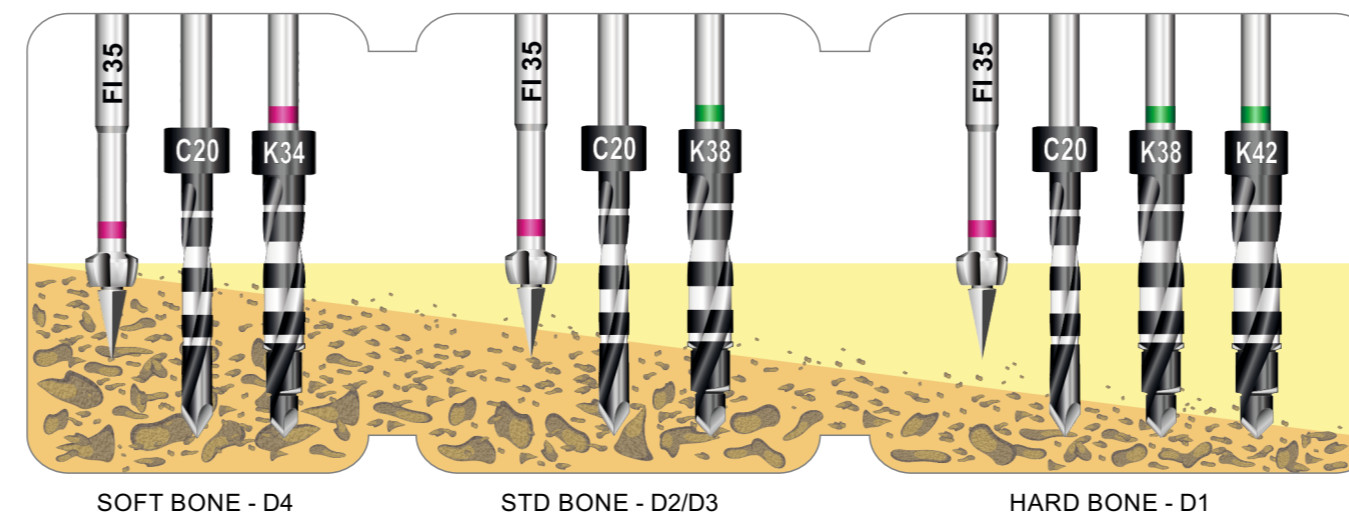


**UNI-Q-MUA 2.0** is the evolution of the original UNI-Q-MUA designed in 2015, developed and improved from RESISTAR&D department for a surgical total approach.

Designed for the realization and simplification of the Toronto-type prosthesis, it widens its field of application to crowns and bridges. With a 1.5mm trans-gingival neck and a hexagonal anti-rotational prosthetic platform, it allows direct tightening of even a single screwed crown.

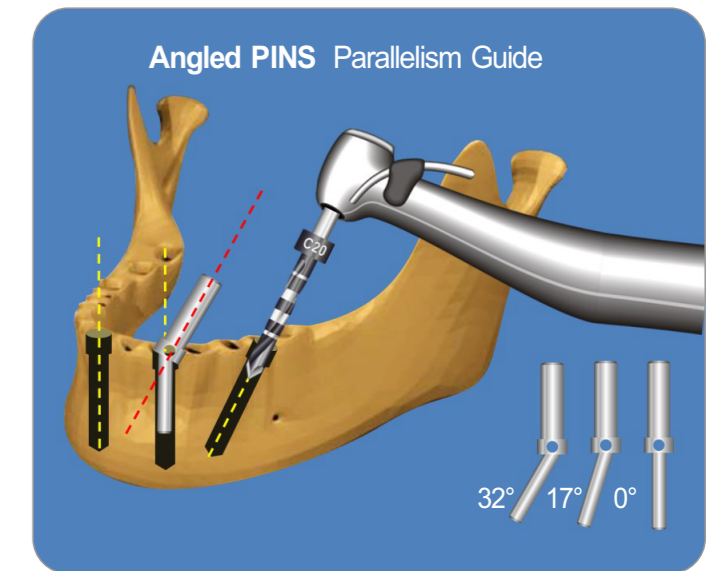


### SURGICAL SEQUENCE FOR UNI-Q-MUA Ø 3.8



# UNI-Q-MUA

## Easier surgical approach



### UNI-Q-MUA 2.0

Pre-Angled PINs are indicated for using during surgery, both for helping choosing the implant and as surgical guide.

The **VPS** is the solution for the final positioning of the implant allowing a fine tuning of the orientation of the head..

After the disappearing of the last turn of the thread, during the screwing, UNI-Q-MUA allows a further complete downwards tour and a final 180° allowance of fine correction.

UNI-Q-MUA has a pre-assembled Moulder device on his head: simply a masterpiece of mechanical and bio engineering. With a minimal transgingival volume and four landmarks, it allows its simple final positioning.

